

Perfect Quality Control  
at all three stages of a flexo print production

PRODUCT SPECIFICATIONS

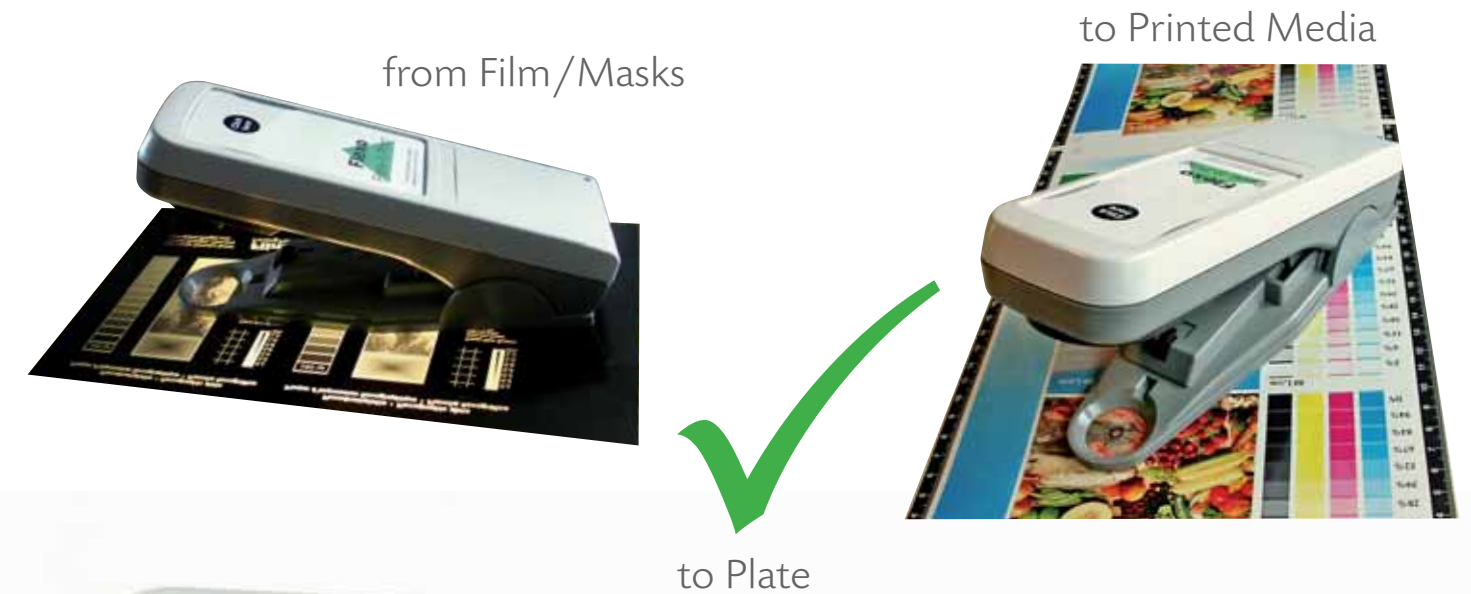
FEATURES	
<b>▼ Media</b>	
Film and Film masks (LAM)	✓
Flexo and letter press plates	✓
Printed copy (physical readings)	✓
<b>▼ Dot Evaluation</b>	
Halftone dots: 85 lpi - 175 lpi (35 - 70 lpcm)	✓
Numeric %-display	✓
Dynamic graphic display	✓
Screen angle / ruling calculation	✓
Positive / Negative reading	✓
Accuracy ± 1% over full range of readings	✓
Imaging time: < 1 second	✓
Geometric measurements	✓
<b>▼ Value comparison</b>	
Numeric and graphical comparison between film readings, plate readings and print readings	✓
<b>▼ Interface</b>	
High speed USB 2.0 link	✓
<b>▼ Optical Range</b>	
Field of view approx. 0.85 x 0.60 mm	✓
<b>▼ Connectivity &amp; Storage</b>	
.jpg, .bmp or .p2p file formats	✓
Direct application interface (RIPs, spreadsheets, etc)	✓
<b>▼ Light Source</b>	
White light LED	✓

(Specification subject to change without notice)

TECHNICAL SPECIFICATIONS

FEATURES	
<b>▼ Electronics</b>	
Full 24 bit colour RGB camera with 640 x 480 pixel resolution.	✓
USB Control via PC	✓
Powered via USB – no batteries needed	✓
<b>▼ Dimensions</b>	
Plate-II-Print: 7 x 21 x 5 cm (W x D x H)	✓
Plate-II-Print softcase: 17 x 24 x 8 cm (W x D x H)	✓
<b>▼ Weight</b>	
Plate-II-Print: 470 g (1.0 lbs)	✓
Plate-II-Print with softcase: 780 g (1.7 lbs)	✓
<b>▼ Environmental conditions</b>	
Temperature: 16° - 32° C (60° - 90° F)	✓
Humidity: 40% - 60%, non-condensing	✓
<b>▼ Minimum PC-requirements</b>	
Pentium IV, 1 GHz, 512 MB RAM, 1024 x 768, 24-bit Display, USB 2.0, 1+ GB harddisk space	✓
<b>▼ Operating Systems</b>	
Windows XP/2000/Vista (1+GB RAM required)	✓
<b>▼ Warranty</b>	
12 months return to base. Software upgrades FOC for 12 months after purchase.	✓

(Specification subject to change without notice)



1 & 2 Blackworth Court  
Blackworth Industrial Estate  
Highworth, Wiltshire, SN6 7NS  
United Kingdom

Tel: +44 (0) 1793-766-355  
Fax: +44 (0) 1793-766-356  
info@troika-systems.com  
www.troika-systems.com

Your authorised Flexo Plate-II-Print dealer:

JV Imaging Solutions, Inc.  
1257 F Kennestone Circle  
Marietta, GA 30066  
Phone: 1-800-464-2931, 770-420-4006  
Fax: 770-420-2952  
Email: techcenter@jvimaging.com

With Flexo Plate-II-Print, dot measurement has never been so fast and easy. Save valuable production time by getting to the bottom of print problems with a click of a button. Visually see and measure dot sizes on film/masks, printing plates and printed copy. End the fingerpointing between prepress and platemaking and the printing department. Never has there been so much power packed into such a portable and easy-to-use solution for solving flexo printing problems.

### WHY PLATE-II-PRINT?

The hand-held **Plate-II-Print** tool is an inexpensive **QA-device** for flexo printers, label printers and trade houses to check both *plate quality* and *print quality* quickly and efficiently.

Measurement of dot percentage and line count on masks and printed copy is completely automatic. For measuring dot percentages on plates, a simple three click mouse technique is required.

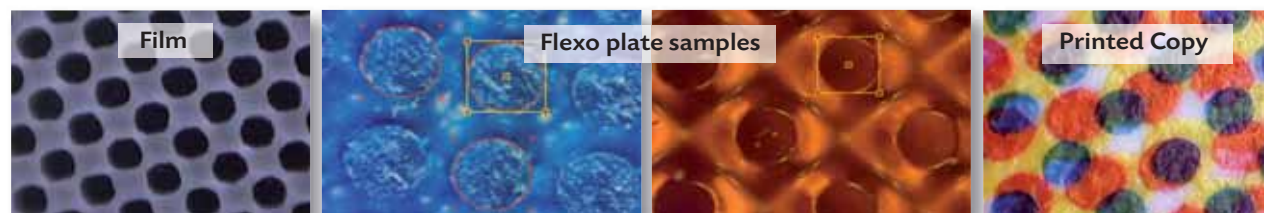
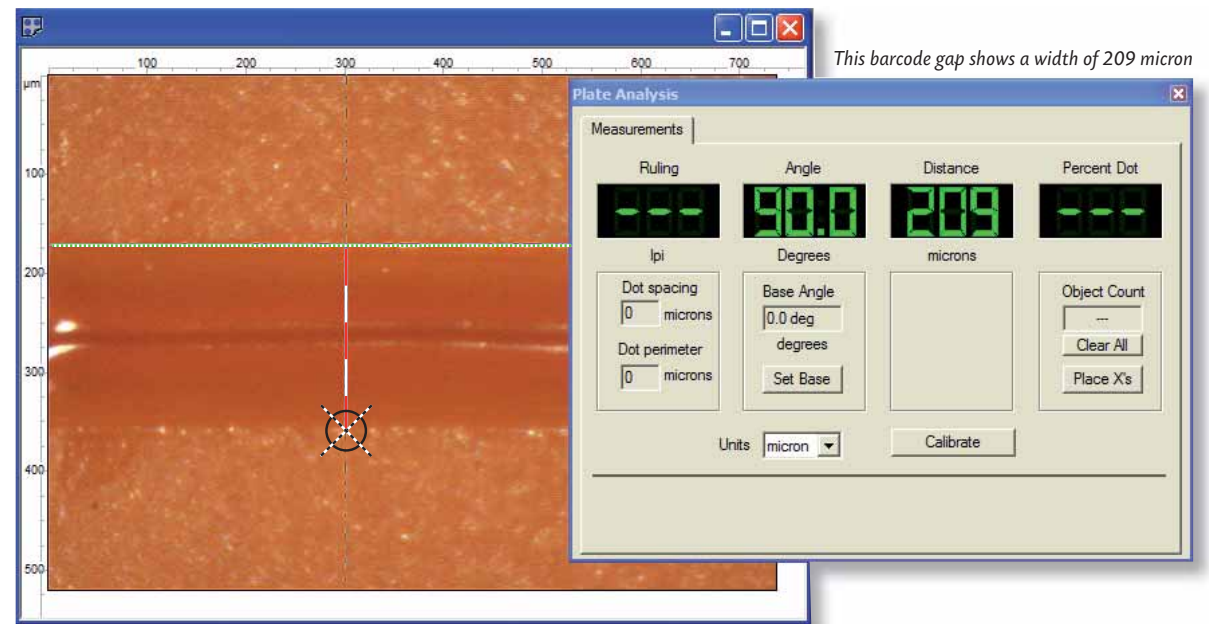
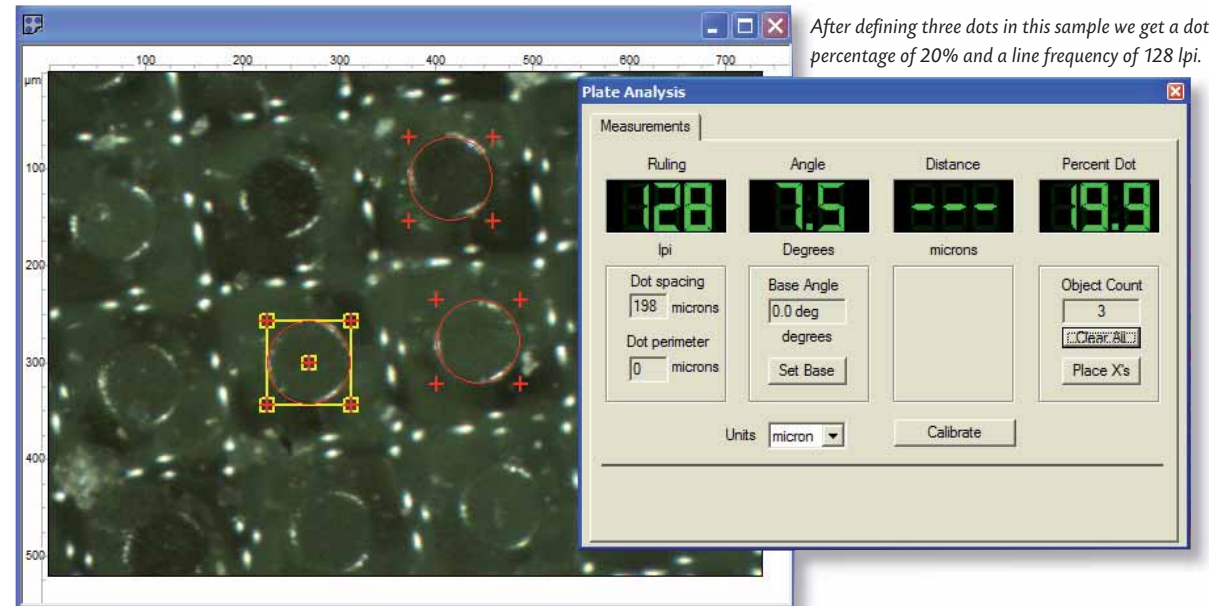
This very easy to use QA-tool has been designed to help identify plate issues that cause press downtime.

It's ability to view and check the final print is very useful for identifying printing issues and help to maintain the level of quality desired by professional printers.

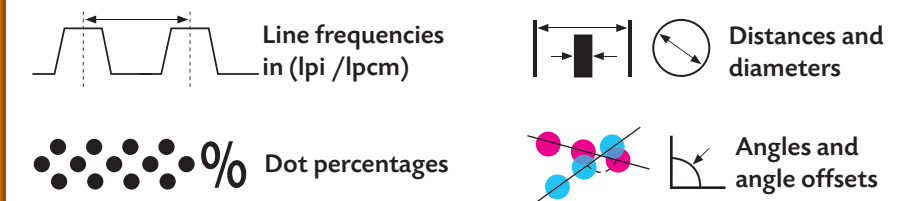
Plate-II-Print is a visual tool that allows you to see the dots you are measuring. Press time is too valuable to leave things to chance, so take control of what goes on press.

### DOT PERCENTAGES, SCREEN COUNTS AND OTHER MEASUREMENTS

The measurements window provides the user with all tools required to measure the dot percentage, line ruling, diameters, distances and angles. The dot percentage is calculated by defining the shape of three or more dots. This is done by clicking in the three reflections defining the dot shoulders (the reflections are caused by the **3-LED illumination system**). Once a dot shape is defined it can be copied to two neighbour dots and we get a reading.



### WHAT CAN BE MEASURED?



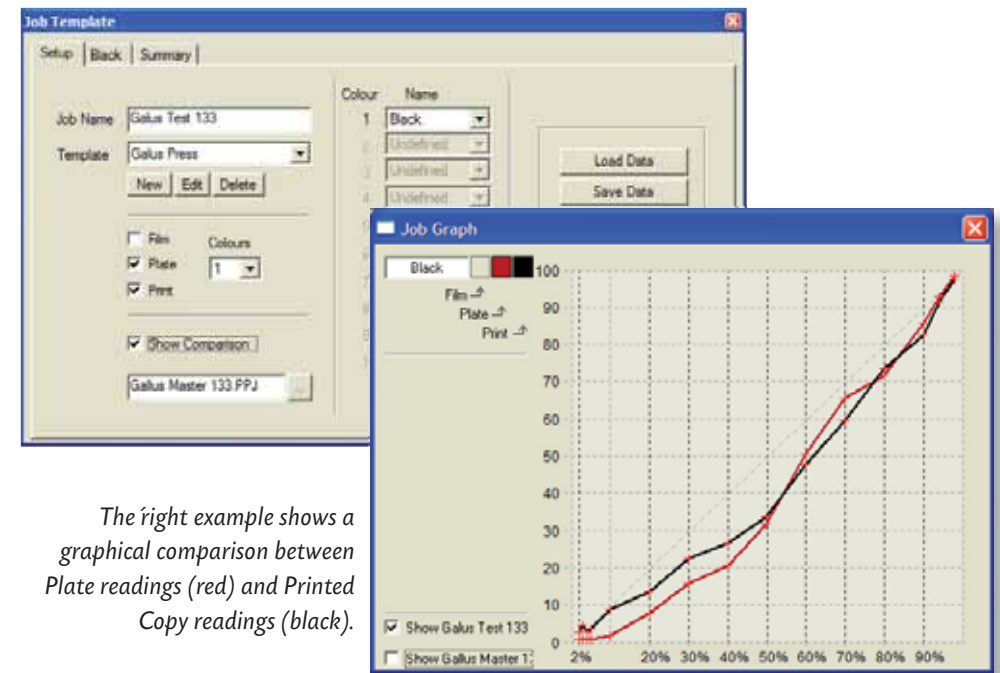
### EASY TO OPERATE

Plate-II-Print is very simple to operate. Firstly place the target hole over the point to be measured. Then lower the top down onto the target area and press the button on the top of the Plate-II-Print camera to capture the image:



### FINGERPRINT ALL THREE STAGES OF PRODUCTION

Plate-II-Print allows to compare all readings against each other. Simply enable the feature and the software moves reading after reading into a predefinable form. After all readings have been gathered the percentage values between film, plate and printed copy can be visually and graphically compared.



The right example shows a graphical comparison between Plate readings (red) and Printed Copy readings (black).

### KEY BENEFITS OF FLEXO PLATE-II-PRINT

- ▶ Proven on over 40 flexo plate materials.
- ▶ Catch plate problems before they reach the press with oncoming plate inspection.
- ▶ Perfect tool for fingerprinting the press
- ▶ Generates a complete dot gain curve in minutes
- ▶ Compares dot sizes on masks, plate and printed copy – all on a single graph in minutes.
- ▶ Works on metal backed plate materials (letter press)
- ▶ Accuracy ± 1%.
- ▶ Halftone dot measurement: 85 - 175 lpi (35 - 70 lpcm).
- ▶ Imaging time typically 1 sec.
- ▶ Screen angle and ruling calculator.
- ▶ Hard copy and electronic reporting
- ▶ Direct RIP interface.
- ▶ Saves the image for archiving or e-mailing for further analysis.

see the dots . . . .

